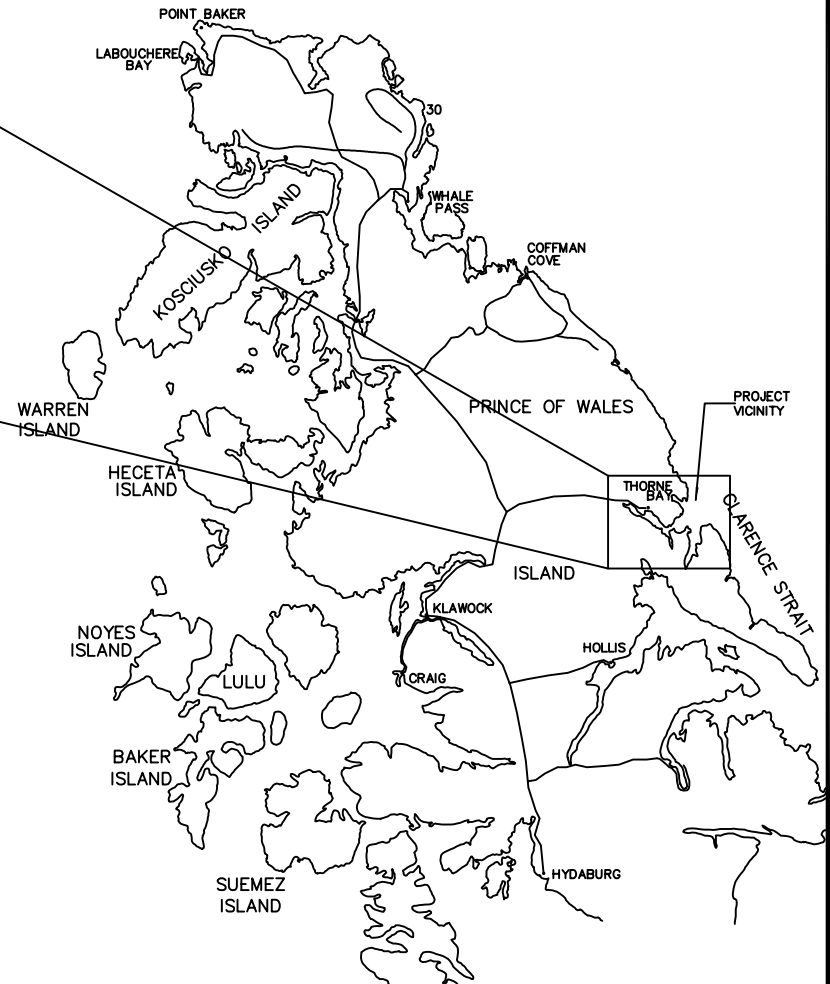
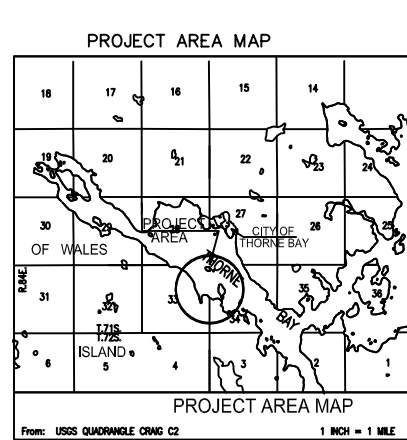


DAVIDSON LANDING HARBOR IMPROVEMENTS



INDEX TO SHEETS

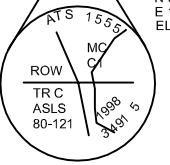
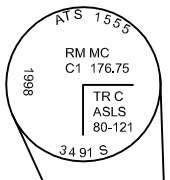
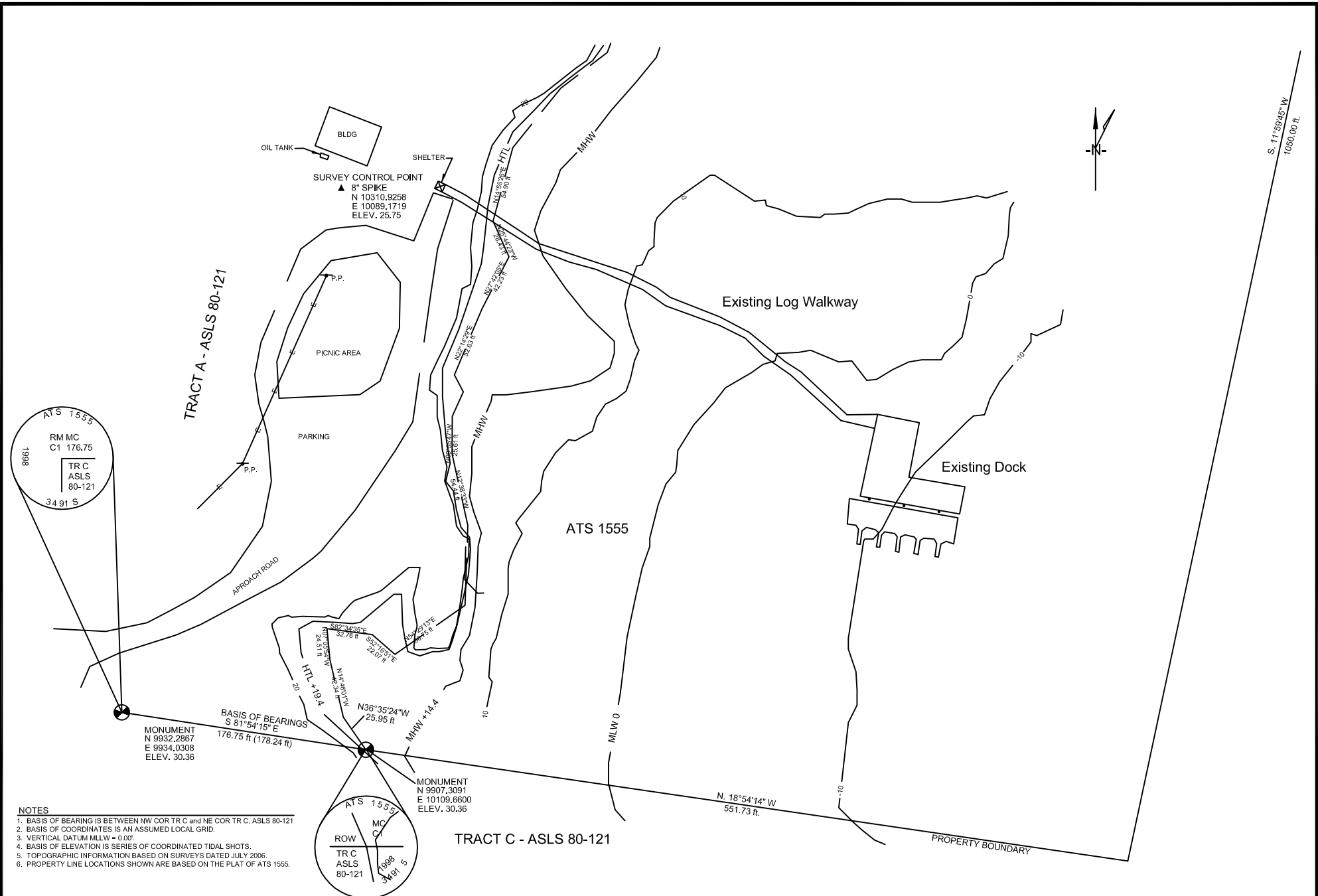
COVER-TITLE-INDEX _____	1
EXISTING SITE _____	2
PREVIOUSLY APPROVED SITE PLAN _____	3
PROPOSED SITE PLAN AMENDMENT 2 _____	4
DOCK PLAN _____	5
DOCK FILL - SECTIONS _____	6
LAUNCH/RAMP PROFILE and CROSS-SECTIONS _____	7
LAUNCH/RAMP DETAILS _____	8

ARMY CORP. OF ENGINEERS
APPLICATION
City of Thorne Bay
P.O. Box 19110
Thorne Bay, AK 99919

City of Thorne Bay
DAVIDSON LANDING
HARBOR IMPROVEMENT
COVER - TITLE - INDEX

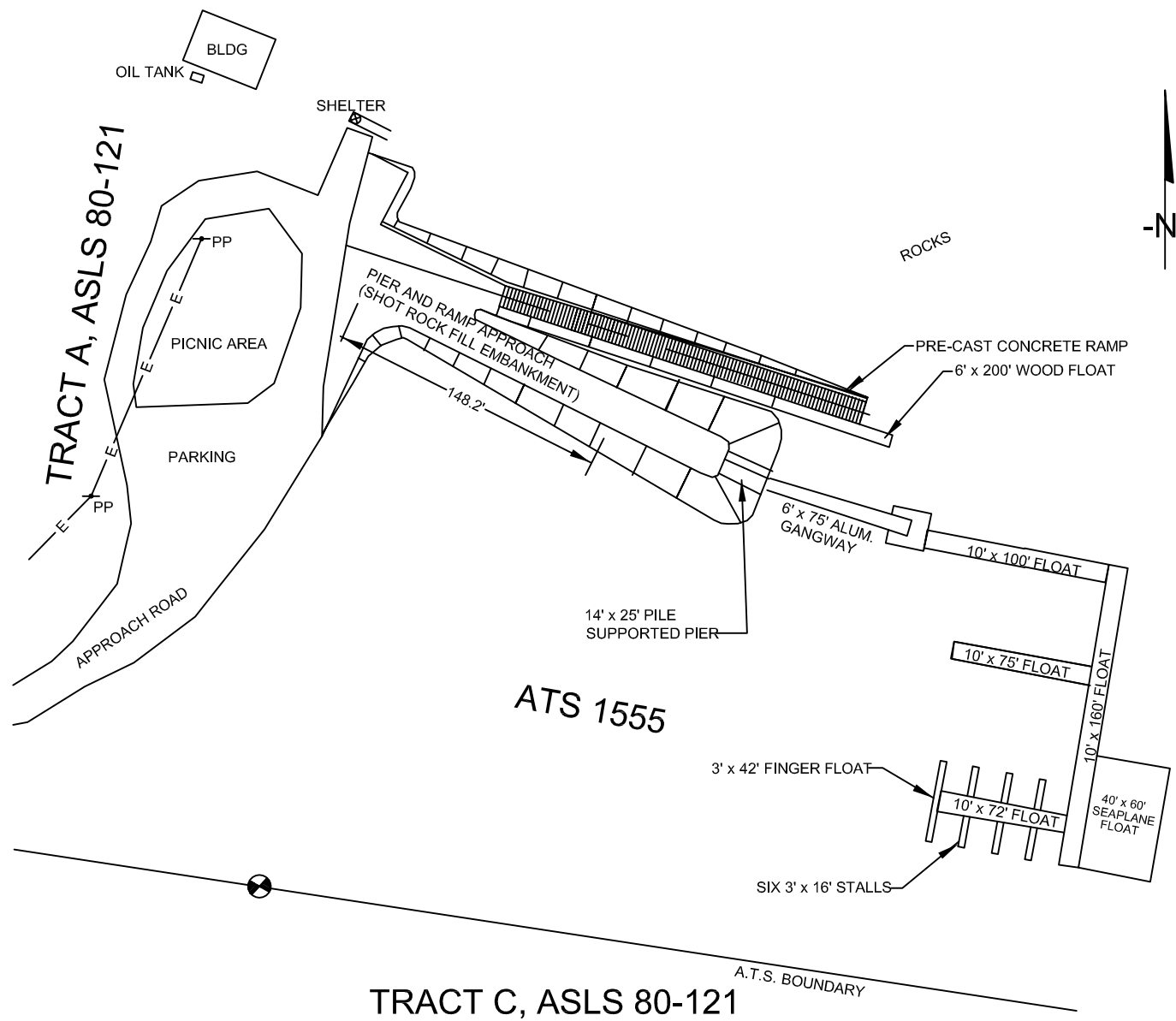
Date: 10/19/08

Page 1 of 8



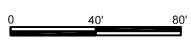
- NOTES**
1. BASIS OF BEARING IS BETWEEN NW COR TR C and NE COR TR C, ASLS 80-121
 2. BASIS OF COORDINATES IS AN ASSUMED LOCAL GRID.
 3. VERTICAL DATUM MLLW = 0.00'
 4. BASIS OF ELEVATION IS SERIES OF COORDINATED TIDAL SHOTS.
 5. TOPOGRAPHIC INFORMATION BASED ON SURVEYS DATED JULY 2006.
 6. PROPERTY LINE LOCATIONS SHOWN ARE BASED ON THE PLAT OF ATS 1555.

<p>ARMY CORP. OF ENGINEERS APPLICATION</p> <p>City of Thorne Bay P.O. Box 19110 Thorne Bay, AK 99919</p>	<p>City of Thorne Bay DAVIDSON LANDING HARBOR IMPROVEMENT EXISTING SITE</p> <p>Date: 10/19/08 Page 2 of 8</p>
--	---



TRACT C, ASLS 80-121

ATS 1555

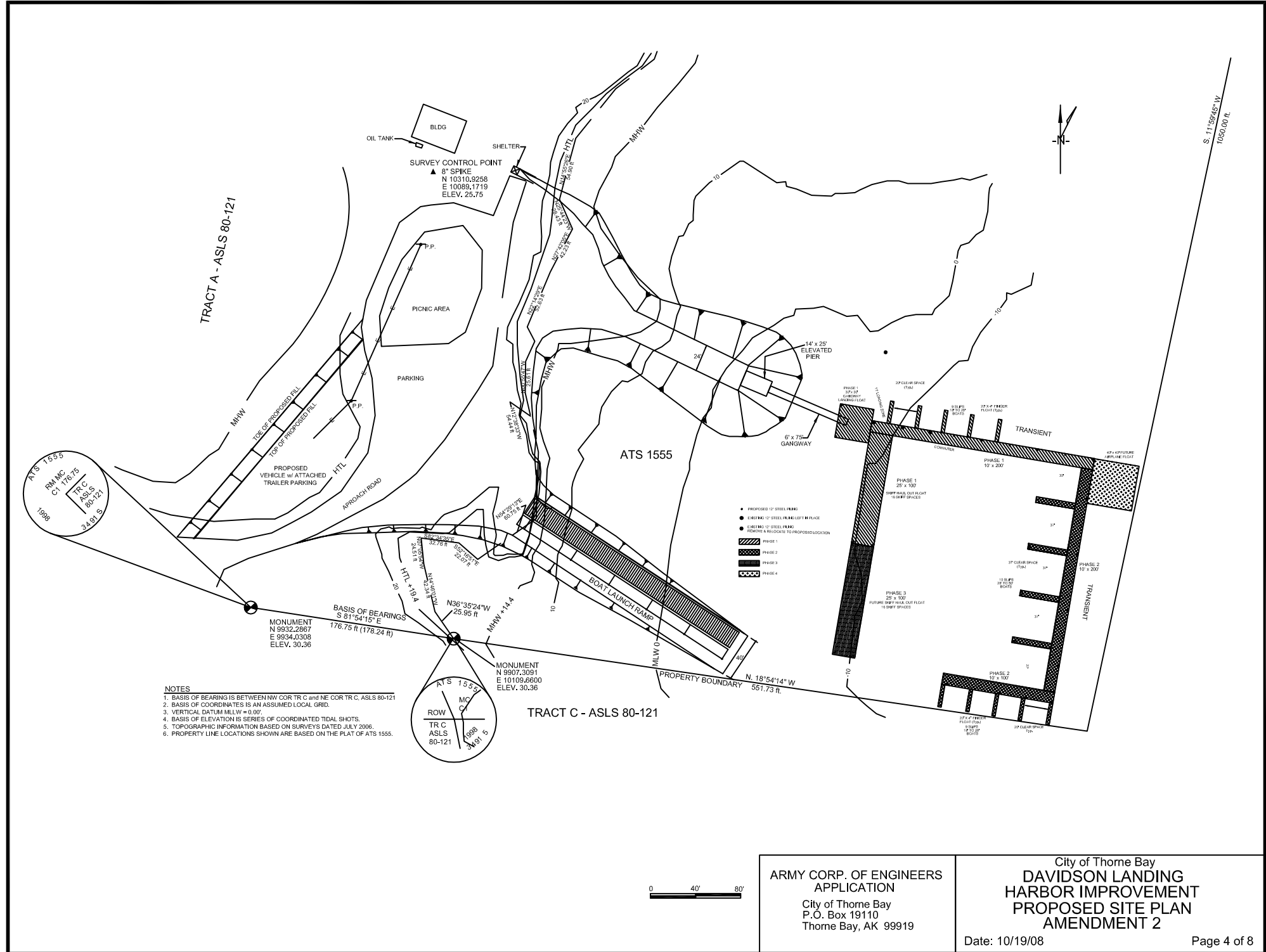


ARMY CORP. OF ENGINEERS
APPLICATION
City of Thorne Bay
P.O. Box 19110
Thorne Bay, AK 99919

City of Thorne Bay
DAVIDSON LANDING
HARBOR IMPROVEMENT
PREVIOUSLY APPROVED SITE PLAN

Date: 10/19/08

Page 3 of 8



TRACT A - ASLS 80-121

ATS 1555

TRACT C - ASLS 80-121

S. 11°39'45" W
1050.00 R.

SURVEY CONTROL POINT
▲ 8" SPIKE
N 10310.9258
E 10089.1719
ELEV. 25.75

MONUMENT
N 9932.2867
E 9934.0308
ELEV. 30.36

MONUMENT
N 9807.3081
E 10109.6600
ELEV. 30.36

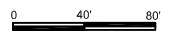
BASIS OF BEARINGS
S 81°54'15" E
176.75 R (178.24 R)

N36°35'24"W
25.99 R

N 18°54'14"W
551.73 R

- PROPOSED 12" STEEL PILING
- EXISTING 12" STEEL PILING
- EXISTING 12" STEEL PILING
- PHASE 1
- PHASE 2
- PHASE 3
- PHASE 4

- NOTES
1. BASIS OF BEARING IS BETWEEN NW COR TR C AND NE COR TR C, ASLS 80-121
 2. BASIS OF COORDINATES IS AN ASSUMED LOCAL GRID.
 3. VERTICAL DATUM MLLW = 0.00'
 4. BASIS OF ELEVATION IS SERIES OF COORDINATED TIDAL SHOTS.
 5. TOPOGRAPHIC INFORMATION BASED ON SURVEYS DATED JULY 2006.
 6. PROPERTY LINE LOCATIONS SHOWN ARE BASED ON THE PLAT OF ATS 1555.

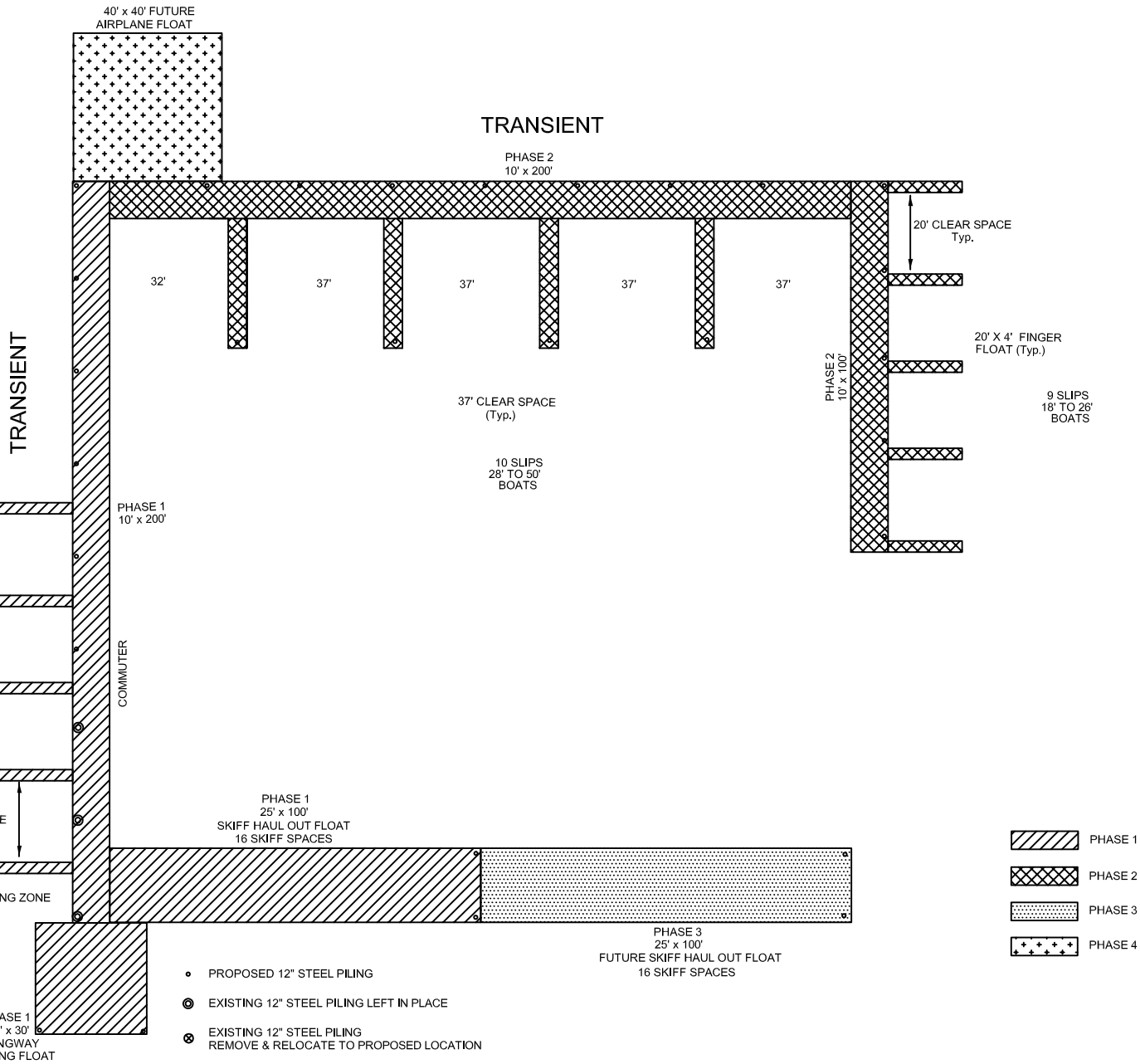






ARMY CORP. OF ENGINEERS
APPLICATION
City of Thorne Bay
P.O. Box 19110
Thorne Bay, AK 99919

City of Thorne Bay
DAVIDSON LANDING
HARBOR IMPROVEMENT
PROPOSED SITE PLAN
AMENDMENT 2

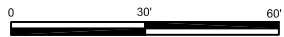
Date: 10/19/08

Page 4 of 8



-  PHASE 1
-  PHASE 2
-  PHASE 3
-  PHASE 4

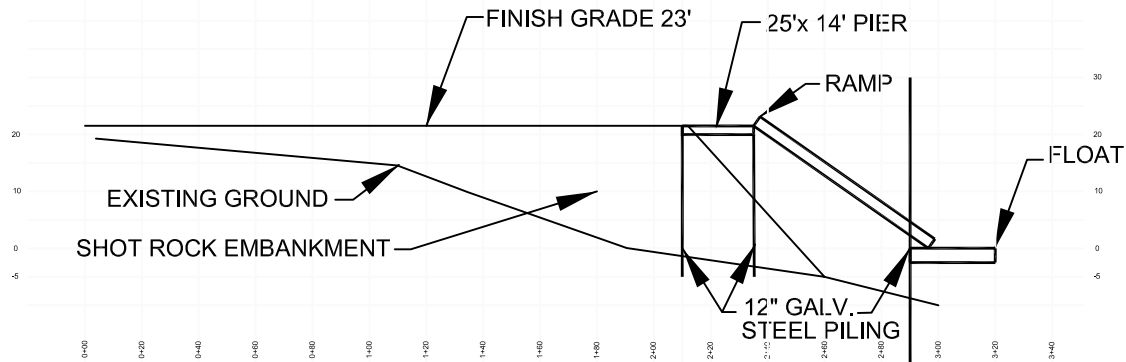
- PROPOSED 12" STEEL PILING
- ⊙ EXISTING 12" STEEL PILING LEFT IN PLACE
- ⊗ EXISTING 12" STEEL PILING REMOVE & RELOCATE TO PROPOSED LOCATION



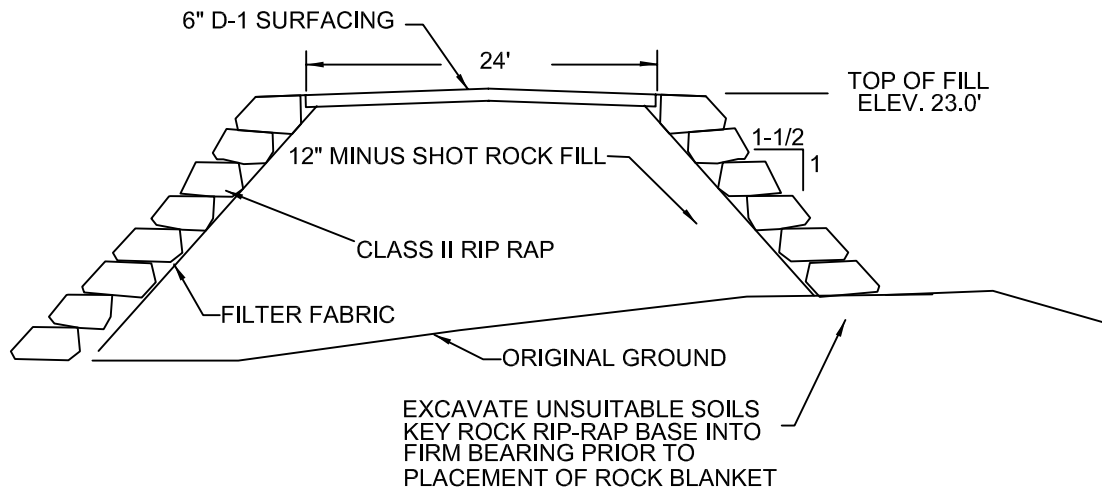
ARMY CORP. OF ENGINEERS
APPLICATION
City of Thorne Bay
P.O. Box 19110
Thorne Bay, AK 99919

City of Thorne Bay
DAVIDSON LANDING
HARBOR IMPROVEMENT
DOCK PLAN

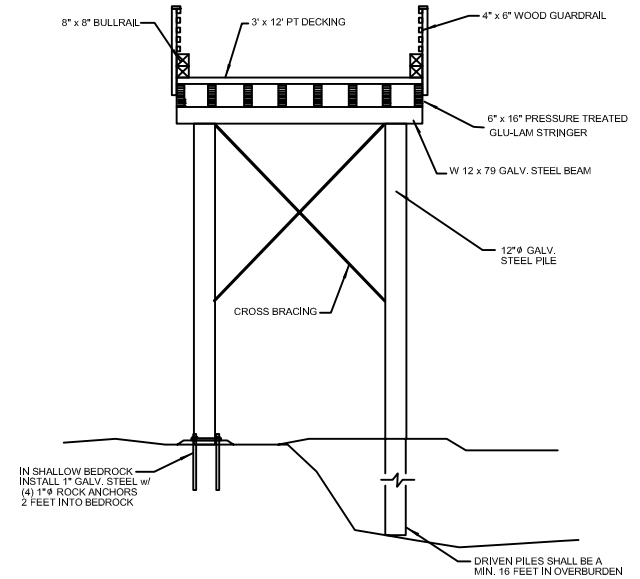
Date: 10/19/08



PROFILE VIEW
ROCK FILL AT PIER/GANGWAY APPROACH



SECTION VIEW
ROCK FILL AT PIER/GANGWAY APPROACH



SECTION VIEW
14' WIDE PIER

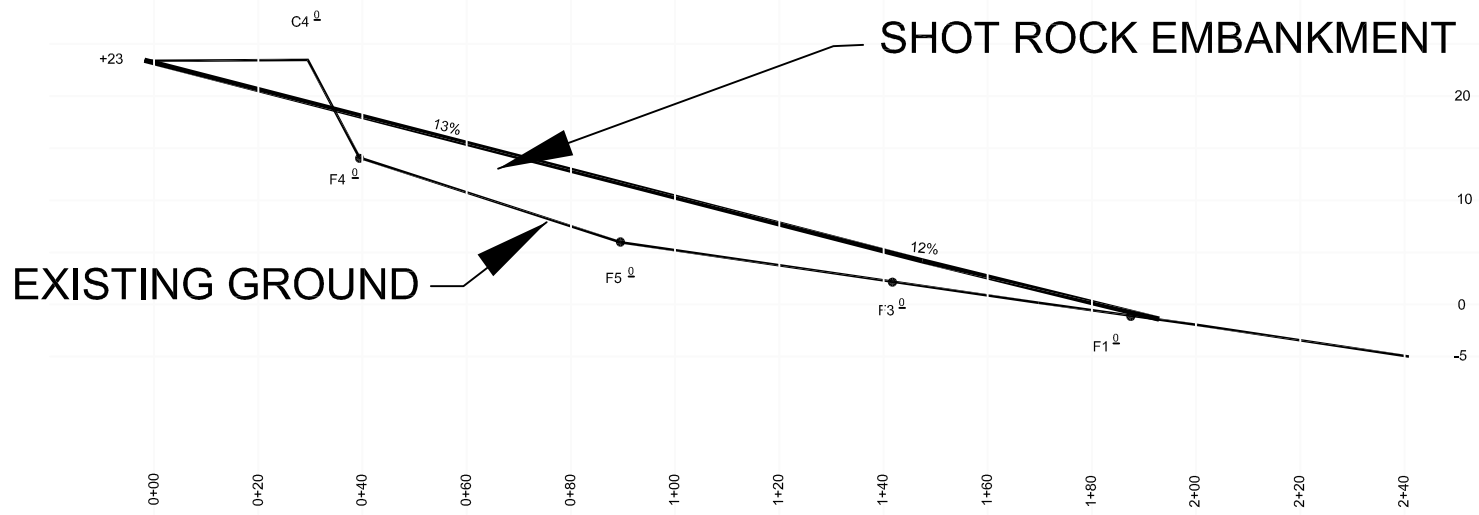
- NO SCALE -

ARMY CORP. OF ENGINEERS
 APPLICATION
 City of Thorne Bay
 P.O. Box 19110
 Thorne Bay, AK 99919

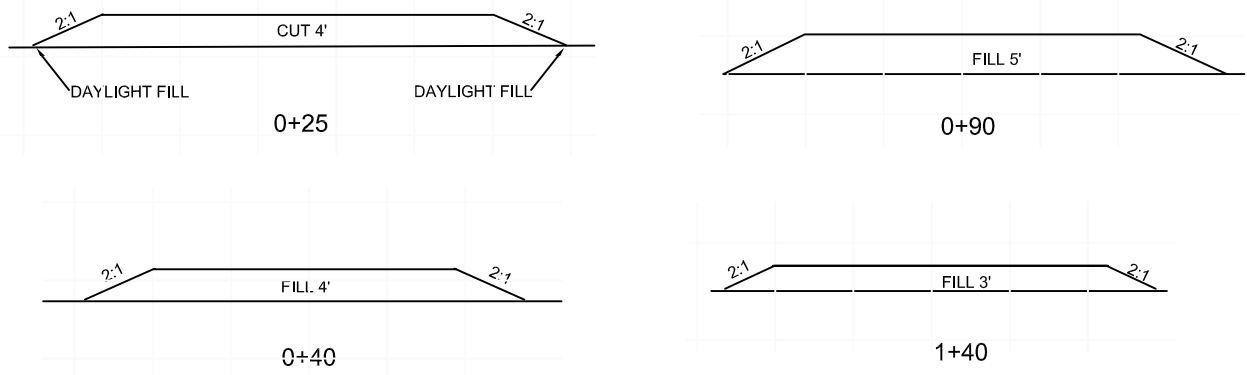
City of Thorne Bay
 DAVIDSON LANDING
 HARBOR IMPROVEMENT
 DOCK FILL - SECTIONS

Date: 10/19/08

Page 6 of 8



LAUNCH/RAMP PROFILE

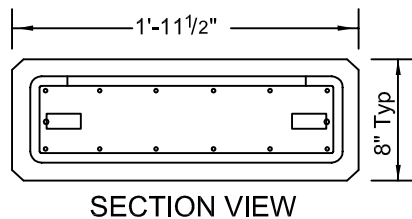
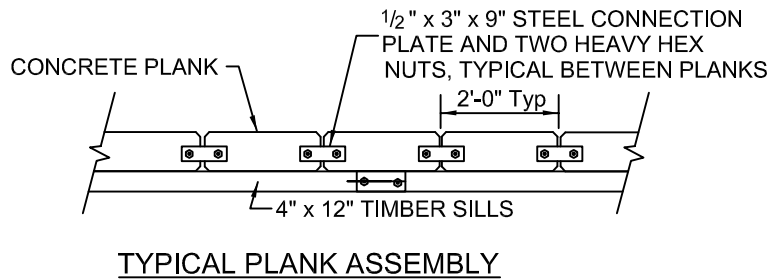
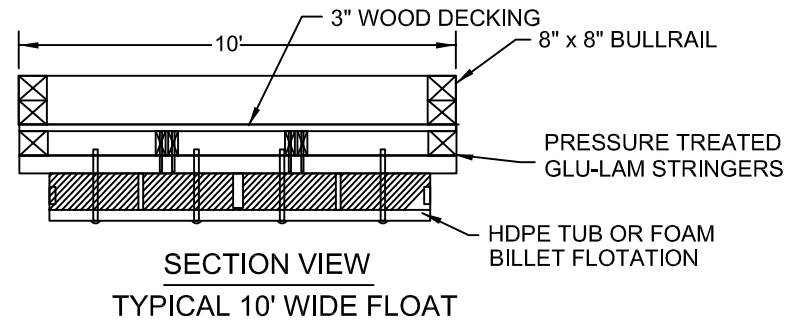
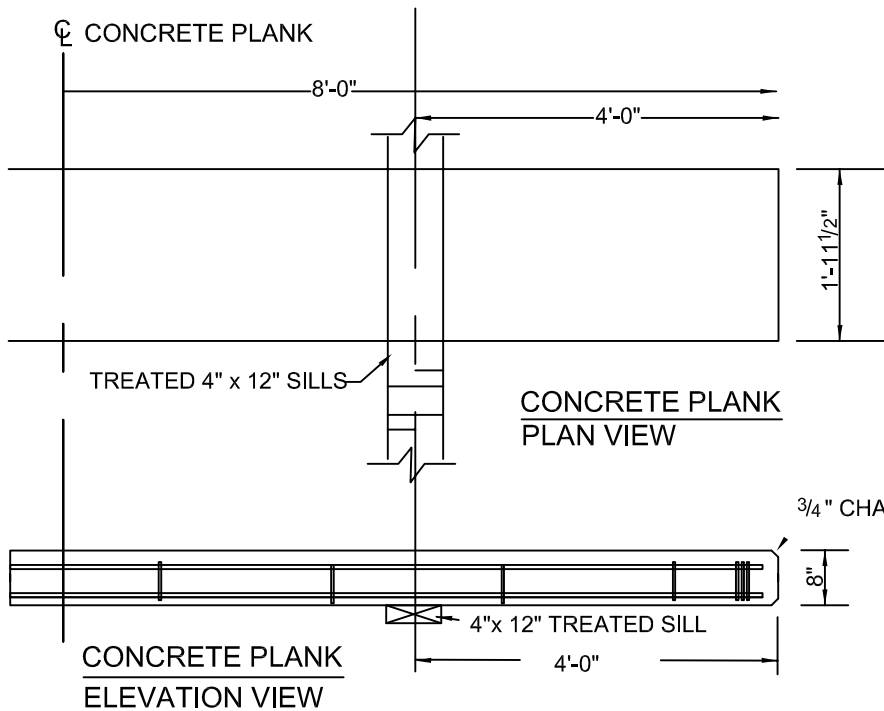


LAUNCH/RAMP CROSS SECTIONS

- NO SCALE -

ARMY CORP. OF ENGINEERS
APPLICATION
City of Thorne Bay
P.O. Box 19110
Thorne Bay, AK 99919

City of Thorne Bay
DAVIDSON LANDING
HARBOR IMPROVEMENT
LAUNCH/RAMP PROFILE and CROSS SECTIONS
Date: 10/19/08 Page 7 of 8



- NO SCALE -

ARMY CORP. OF ENGINEERS
APPLICATION
City of Thorne Bay
P.O. Box 19110
Thorne Bay, AK 99919

City of Thorne Bay
DAVIDSON LANDING
HARBOR IMPROVEMENT
LAUNCH/RAMP DETAILS

Date: 10/19/08

Page 8 of 8